

# Light efficiency:

47 Lumen/Watt

# Light quality:

CRI: 90.2

# Color temperature:

2775 K

Output: 20033 lm

Peak: 153474 cd

Power: 430 W

PF: 1.0

No photo

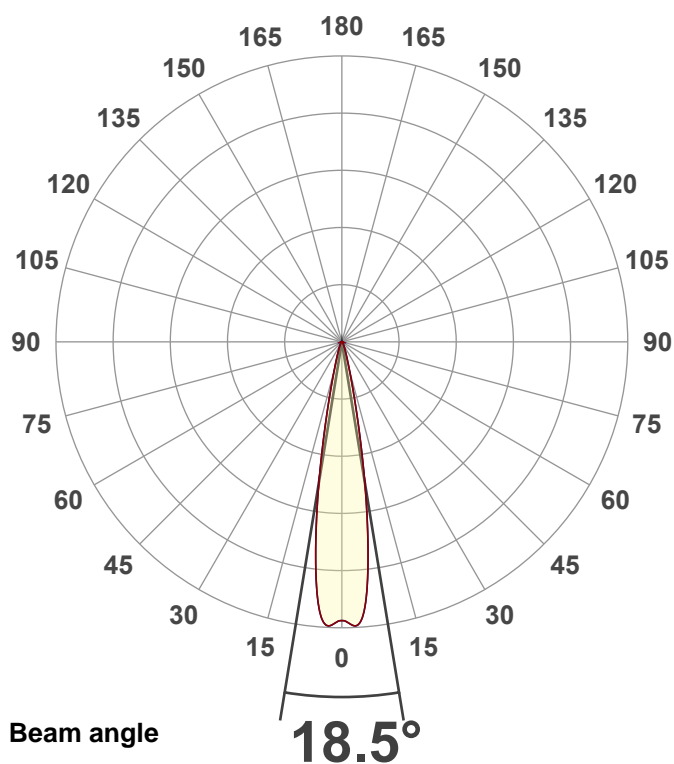
Product name:

40 Hex Panel IP (Full On,2700K)

Item number:

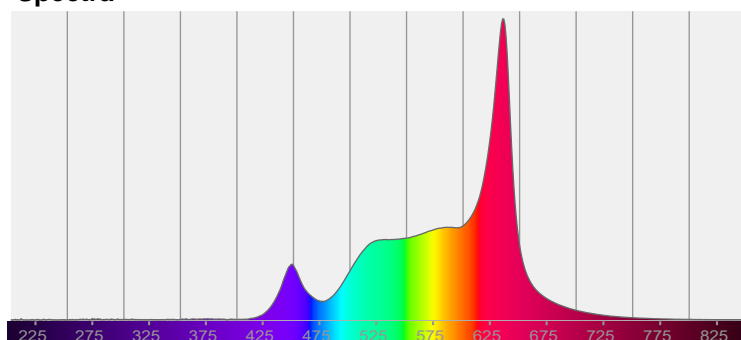
Date and time:

10/9/2025 1:14:45 PM



CIE 1931  
x: 0.453  
y: 0.408

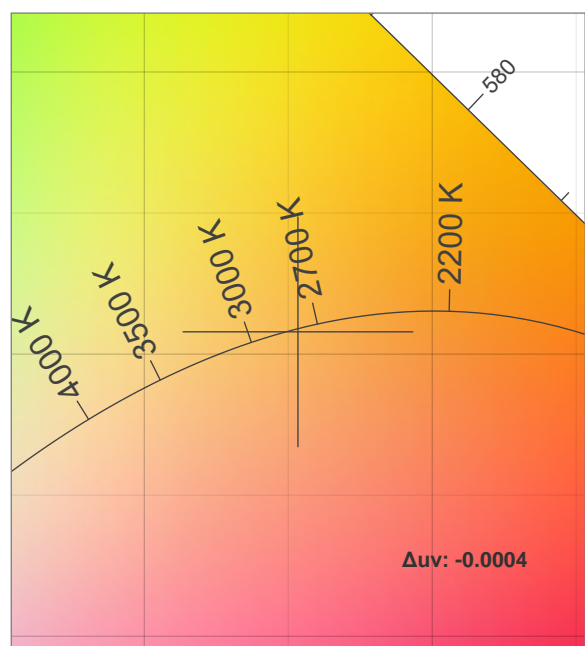
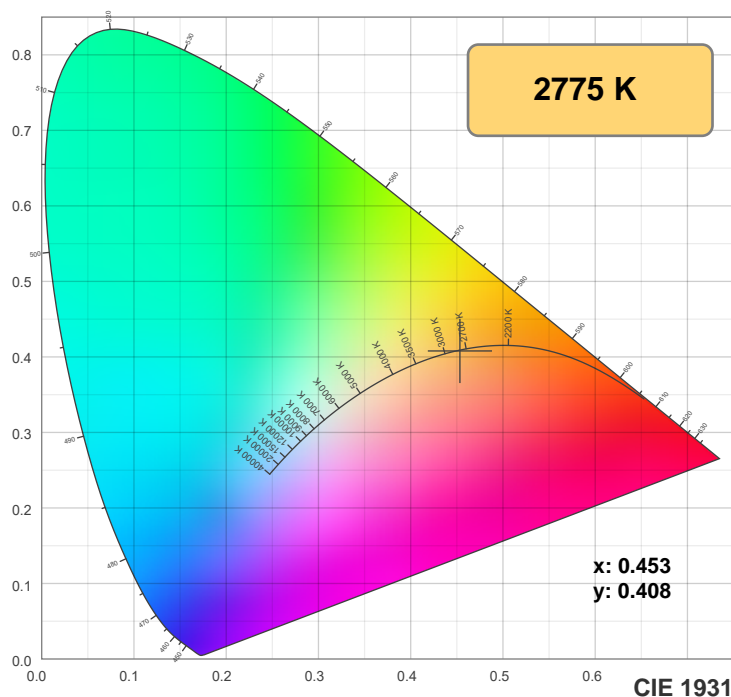
# Spectra



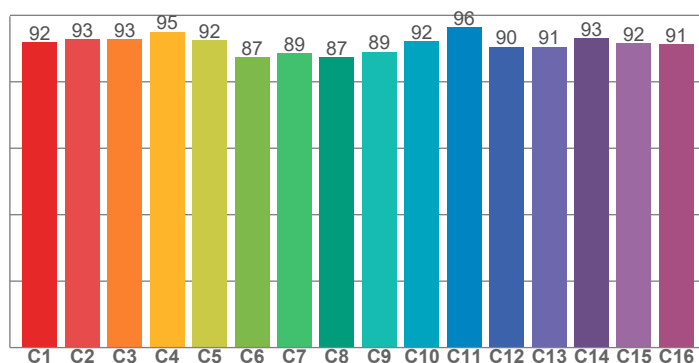
# Power

Voltage: 116 V  
Current: 3.71 A  
Frequency: 0 Hz

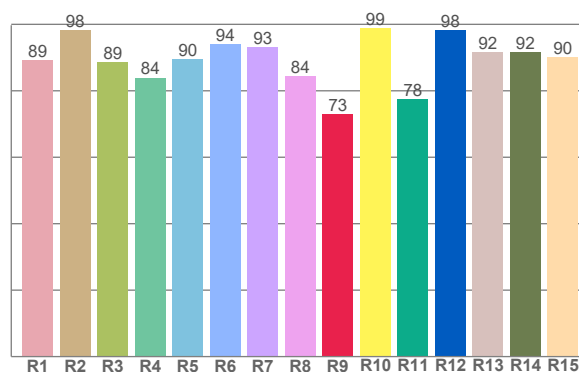
## Color details



**TM-30: 91.9**



**CRI: 90.2 (R1-R8)**



CRI R values, only R1-R8 are used to calculate final CRI value

R1	R2	R3	R4	R5	R6	R7	R8	R9	R10	R11	R12	R13	R14	R15
89.3	98.2	88.7	83.9	89.6	94.1	93.2	84.4	73.0	98.7	77.5	98.1	91.7	91.6	90.0

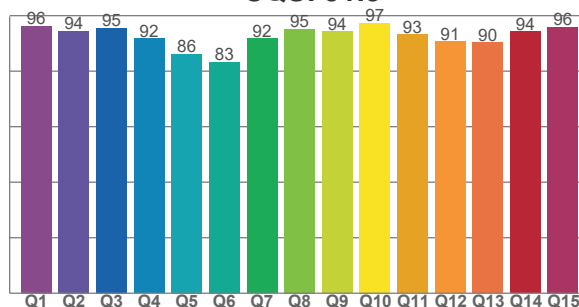
TM30 C values, 16 binned values out of total of 99 C values

C1	C2	C3	C4	C5	C6	C7	C8	C9	C10	C11	C12	C13	C14	C15	C16
91.8	92.8	92.8	95.0	92.5	87.4	88.6	87.3	89.0	92.3	96.3	90.5	90.6	93.1	91.7	91.3

CQS Q values

Q1	Q2	Q3	Q4	Q5	Q6	Q7	Q8	Q9	Q10	Q11	Q12	Q13	Q14	Q15
96.3	94.4	95.5	91.8	86.2	83.3	91.7	95.2	94.2	97.3	93.3	90.8	90.4	94.3	95.9

**CQS: 91.5**



### Color parameters

Color temperature	Color rendering index	Red component	Color fidelity	Color gamut	Color quality scale	Color coordinate cie 1931	Color coordinate cie 1931	Color coordinate	Color coordinate	Color deviation from black body
CCT	CRI	CRI R9	TM30 Rf	TM30 Rg	CQS	x	y	u	v	$\Delta uv$
2775 K	90.2	73.0	91.9	106.9	91.5	0.453	0.408	0.259	0.350	-0.0004

## TM-30 details

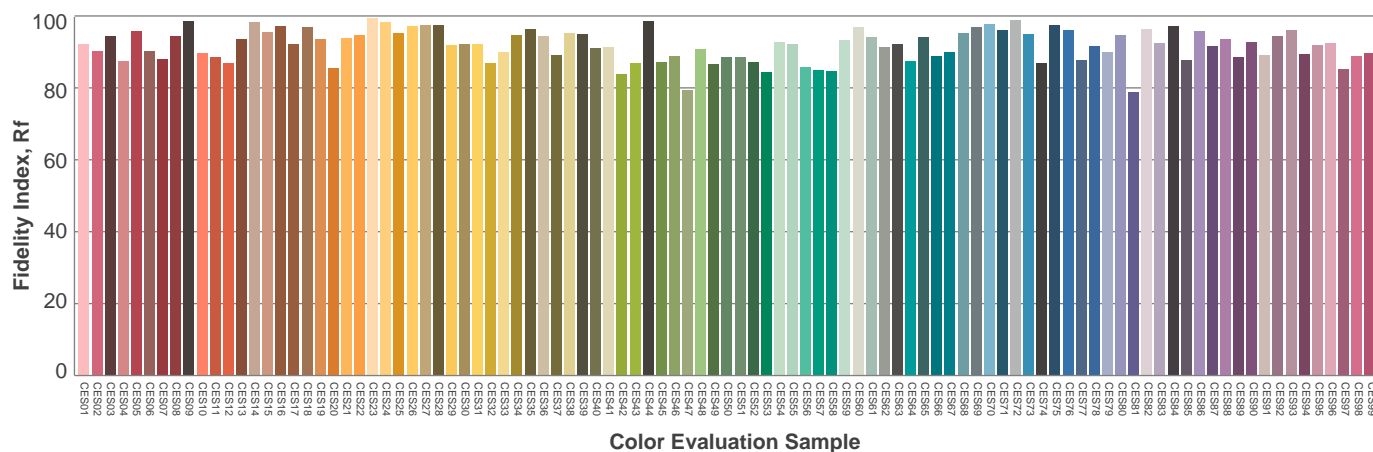
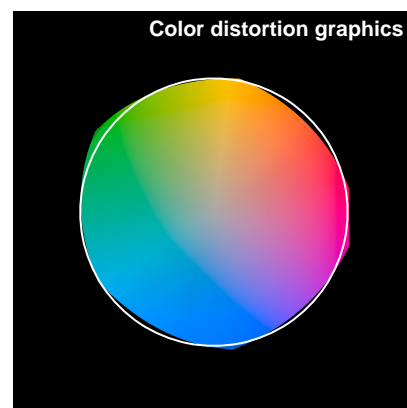
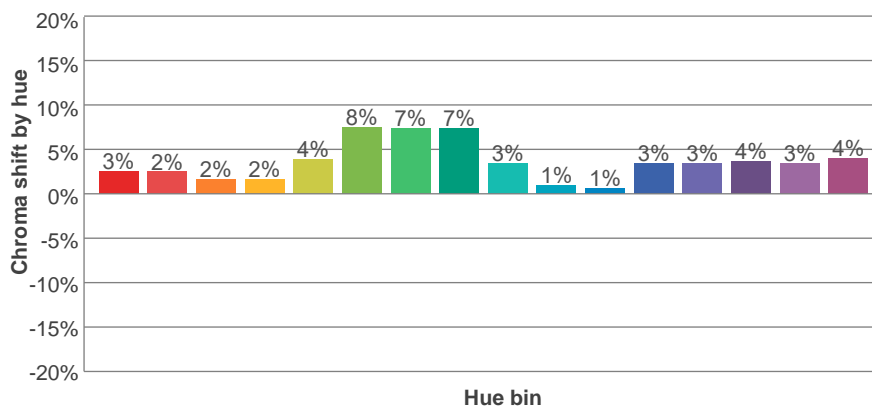
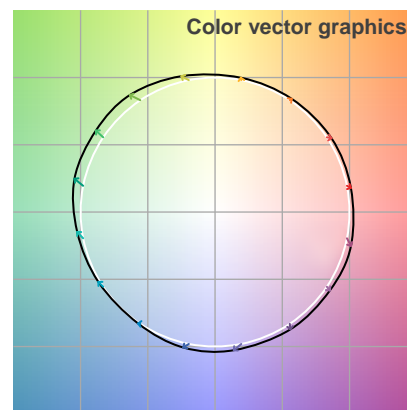
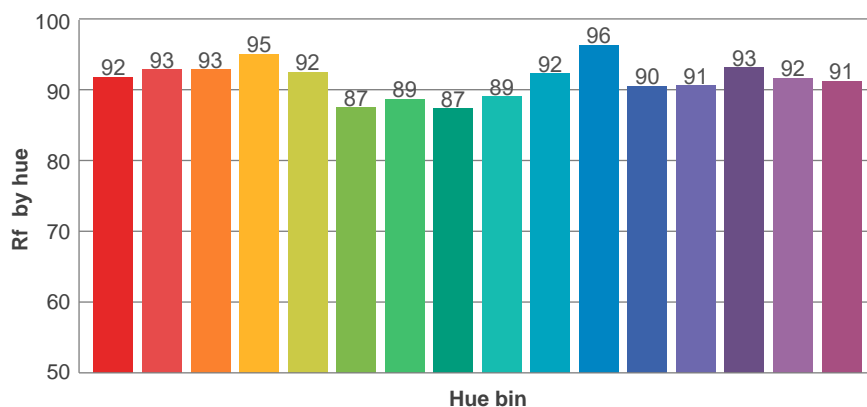
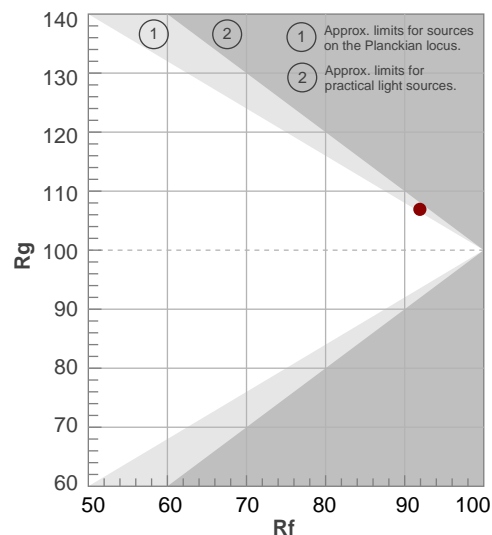
**Rf 91.9**

Fidelity index Rf

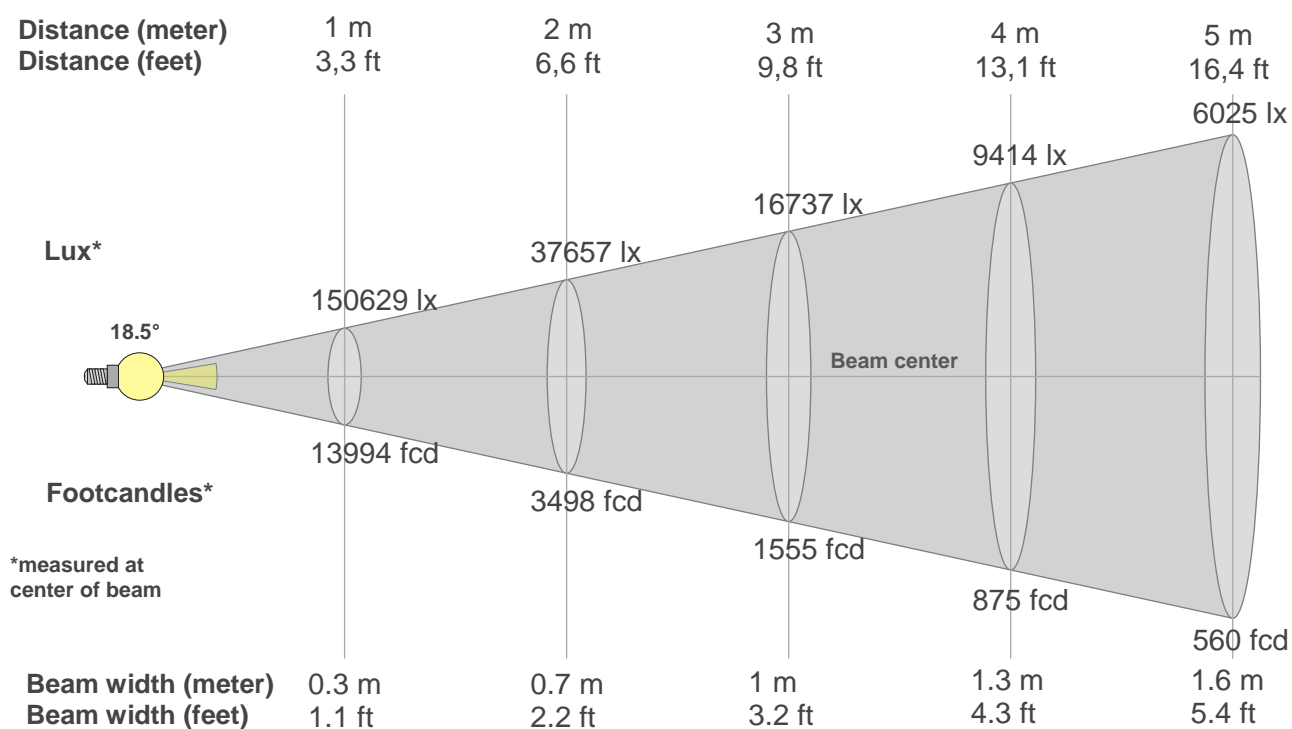
**Rg 106.9**

Gamut index Rg

Hue Bin	R <sub>f</sub>	Shifts (%)	
		Chroma	Hue
1	92	3%	-2%
2	93	2%	-2%
3	93	2%	-1%
4	95	2%	1%
5	92	4%	5%
6	87	8%	4%
7	89	7%	-1%
8	87	7%	-4%
9	89	3%	-5%
10	92	1%	-5%
11	96	1%	-1%
12	90	3%	-3%
13	91	3%	-6%
14	93	4%	-2%
15	92	3%	-1%
16	91	4%	-5%



## Beam details



### Beam intensities from 1-20m

1m	2m	3m	4m	5m	6m	7m	8m	9m	10m	11m	12m	13m	14m	15m	16m	17m	18m	19m	20m
3.3ft	6.6ft	9.8ft	13.1ft	16.4ft	19.7ft	23ft	26.2ft	29.5ft	32.8ft	36.1ft	39.4ft	42.7ft	45.9ft	49.2ft	52.5ft	55.8ft	59.1ft	62.3ft	65.6ft
150629lx	37657lx	16737lx	9414lx	6025lx	4184lx	3074lx	2354lx	1860lx	1506lx	1245lx	1046lx	891lx	769lx	669lx	588lx	521lx	465lx	417lx	377lx
13993.9 fcd	3498.5 fcd	1554.9 fcd	874.6 fcd	559.8 fcd	388.7 fcd	285.6 fcd	218.7 fcd	172.8 fcd	139.9 fcd	115.7 fcd	97.2 fcd	82.8 fcd	71.4 fcd	62.2 fcd	54.7 fcd	48.4 fcd	43.2 fcd	38.8 fcd	35 fcd

### Intensities in 0° c-plane

0°	1°	2°	3°	4°	5°	6°	7°	8°	9°	10°	11°	12°	13°	14°	15°	16°	17°	18°	19°
151k	151k	153k	153k	151k	143k	131k	116k	99k	81k	64k	49k	37k	27k	21k	16k	13k	10k	8k	7k
100%	100%	102%	102%	100%	95%	87%	77%	66%	54%	43%	33%	24%	18%	14%	11%	8%	7%	6%	5%

### Intensities in 90° c-plane

0°	1°	2°	3°	4°	5°	6°	7°	8°	9°	10°	11°	12°	13°	14°	15°	16°	17°	18°	19°
151k	151k	153k	153k	151k	143k	131k	116k	99k	81k	64k	49k	37k	27k	21k	16k	13k	10k	8k	7k
100%	100%	102%	102%	100%	95%	87%	77%	66%	54%	43%	33%	24%	18%	14%	11%	8%	7%	6%	5%

### Intensities in 180° c-plane

0°	1°	2°	3°	4°	5°	6°	7°	8°	9°	10°	11°	12°	13°	14°	15°	16°	17°	18°	19°
151k	151k	153k	153k	151k	143k	131k	116k	99k	81k	64k	49k	37k	27k	21k	16k	13k	10k	8k	7k
100%	100%	102%	102%	100%	95%	87%	77%	66%	54%	43%	33%	24%	18%	14%	11%	8%	7%	6%	5%

### Intensities in 270° c-plane

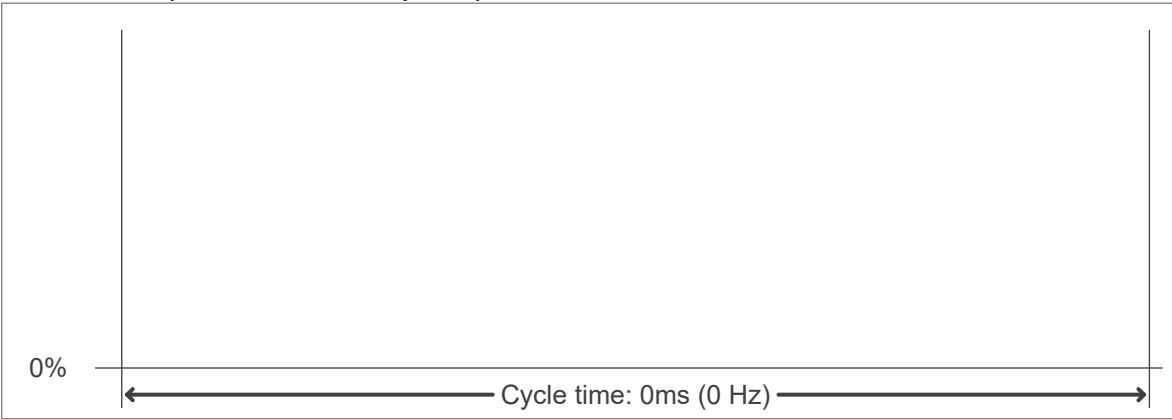
0°	1°	2°	3°	4°	5°	6°	7°	8°	9°	10°	11°	12°	13°	14°	15°	16°	17°	18°	19°
151k	151k	153k	153k	151k	143k	131k	116k	99k	81k	64k	49k	37k	27k	21k	16k	13k	10k	8k	7k
100%	100%	102%	102%	100%	95%	87%	77%	66%	54%	43%	33%	24%	18%	14%	11%	8%	7%	6%	5%

Beam angle 50%	Field angle 10%	Cutoff angle 2,5%	Intensity ratio in 120° cone	Intensity ratio in 90° cone
18.5°	30.3°	46.3°	97.0%	94.1%

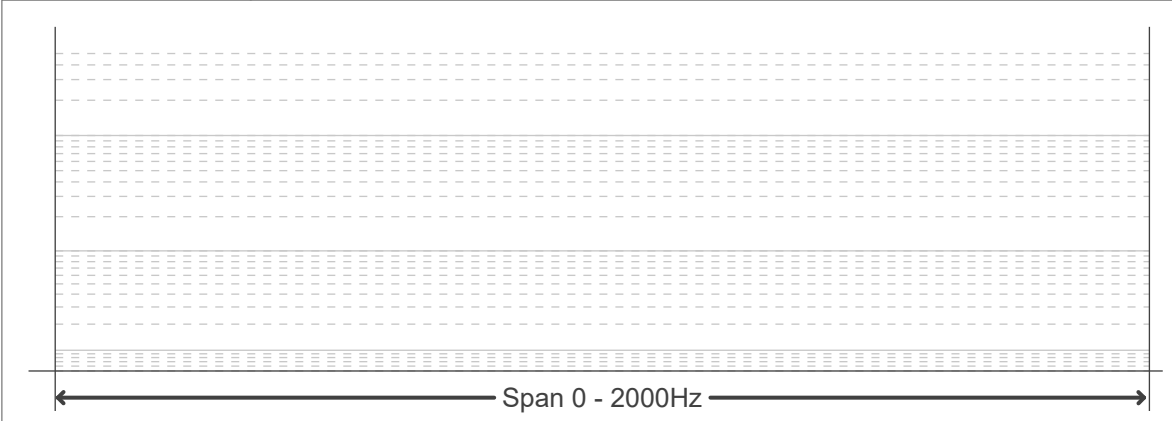
Flicker curve (complete sampled flicker signal)



Flicker frame (frame of one flicker period)



Flicker FFT (frequency scope of flicker curve)



Flicker results:

Flicker frequency:		n/a Hz	
Flicker index:	n/a	JA8/10 40Hz	n/a %
Flicker percentage:	n/a %	JA8/10 90Hz	n/a %
SVM: (Visual flicker)	n/a	JA8/10 200Hz	n/a %
PstLM	n/a	JA8/10 400Hz	n/a %
Mp	n/a	JA8/10 1000Hz	n/a %

Flicker conditions:

Sample rate:	n/a samples/second
--------------	--------------------